

Contact:
Michelle Burks
972-935-7958

Suite 205

\$1,000.00 mo
(Utilities Included)

800 Sq. Ft.
(approx.)

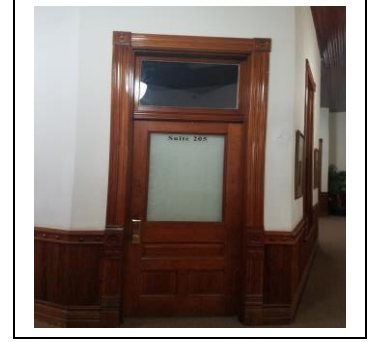
2-Office Suite

Beautiful New
Floors & Fresh
Paint

2nd Floor of
beautiful,
historic
building

Marchman's Corner

200 S. Rogers Street
Downtown Waxahachie



For more Information Contact: Michelle Burks 972-935-7958